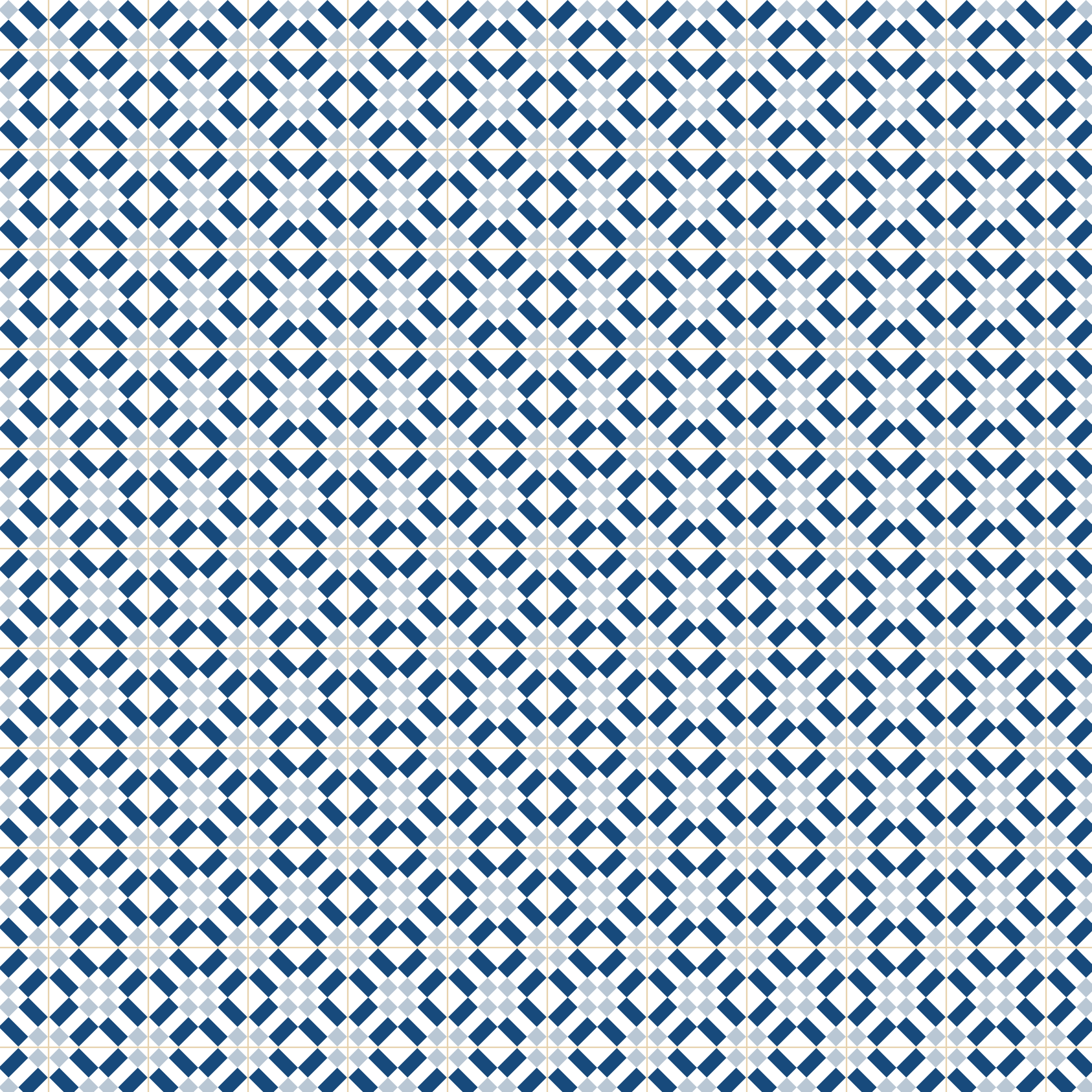


18
EAST
ANDAMAN



THOSE WHO KNOW,
INSIST ON E&O.



a space to soothe your

senses and lift your spirits



THE LOCATION



The northern-most tip of Malaysia's Penang island is the exclusive seafront development of Seri Tanjung Pinang, an address synonymous with luxury living on the island.

The newest addition to this scenic location is Andaman at Quayside, a development with a focus on the finer things in life, complete with stunning views of the ocean, a world-class clubhouse and the first in-residence waterpark. All this is surrounded by 6.9-acres of lush greenery.

Andaman at Quayside is a short walk or drive to Gurney Drive, your connection to the modern amenities of city life and the old world charms that Penang has to offer.



SERI TANJUNG PINANG COMMUNITY

The combination of Seri Tanjung Pinang's premium location and high standards of quality, along with the laidback Penang lifestyle have proven popular with locals and expatriates. Families representing more than 20 nationalities have already made Seri Tanjung Pinang their home.

Whether you're sailing a yacht or just taking a leisurely stroll down the beautiful beach-side promenade, you can do it all with ease. It is a community that appreciates the quality of a rich and colourful life.





STRAITS QUAY

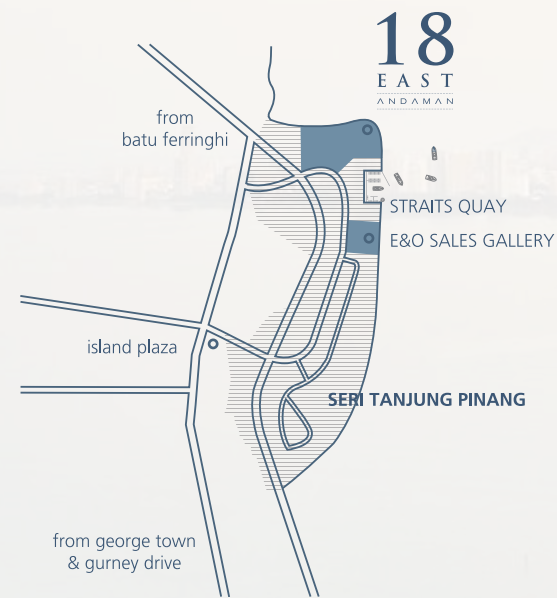
Straits Quay is Penang's first seafront retail marina that adds to the experience of living life by the sea.

Within the marina, there is a vibrant mix of retail, dining and entertainment options, offering something for everyone in the family.

The surrounding views of vessels, the Andaman Sea and the George Town skyline will remind you that there is no place else like this in Asia.



ANDAMAN AT QUAYSIDE

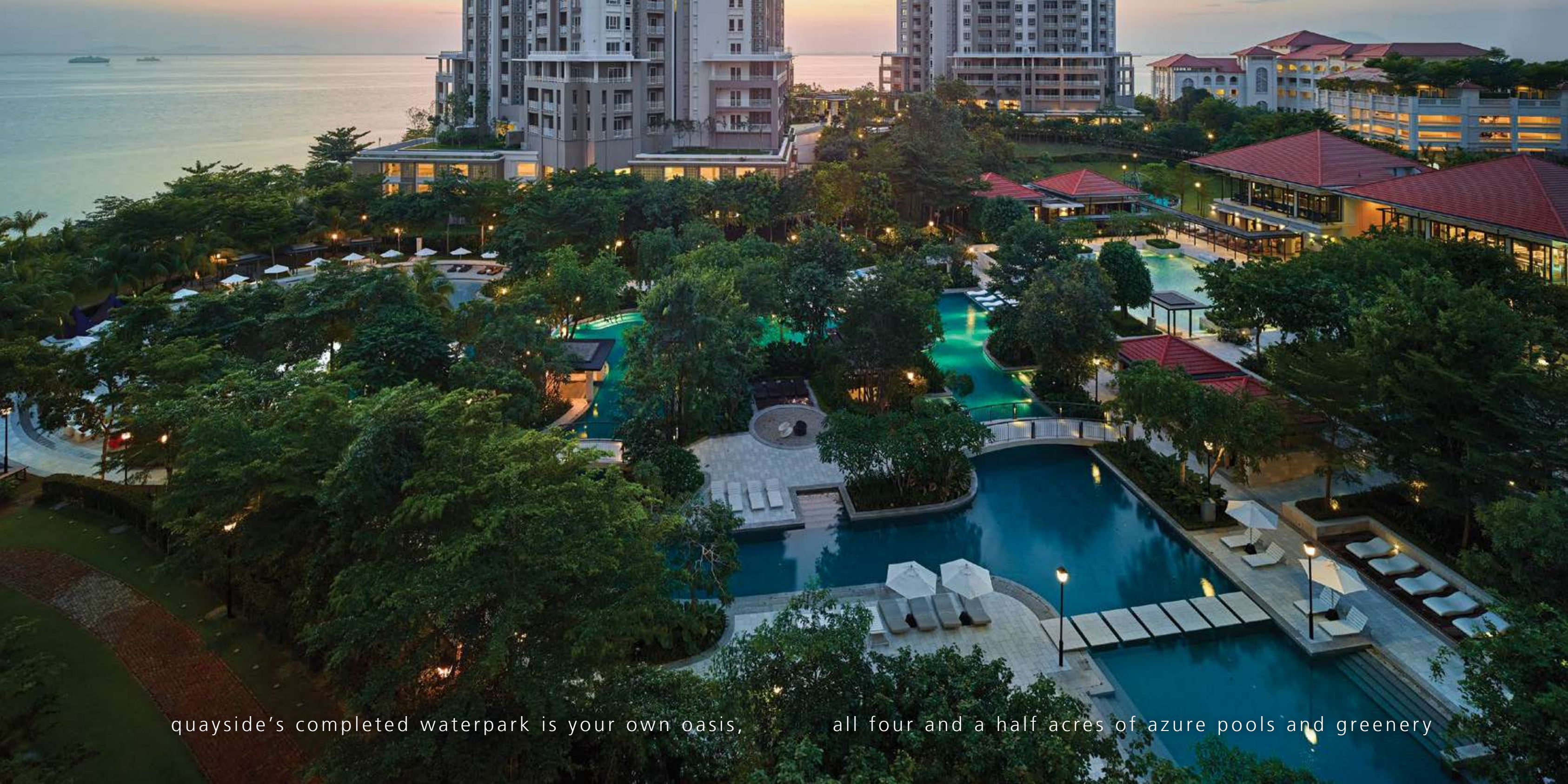


Andaman at Quayside is a 3-tower complex that sits at the pinnacle of Seri Tanjung Pinang.

This freehold seafront real estate is located within walking distance to the Straits Quay marina. It is also easily accessible to international schools, medical facilities, fresh produce markets and a hyper-mart, along with various local and international restaurants and eateries.

There are clubs and hotels in the vicinity, and the landmark Gurney Drive is a few minutes away, too.





quayside's completed waterpark is your own oasis,

all four and a half acres of azure pools and greenery



GROUNDS & FACILITIES

The grounds and facilities supporting this development are complete and ready for viewing. Come experience first-hand how Andaman at Quayside stands out from the crowd.

State-of-the-art integrated security systems provide ease of mind, 24/7.

Within the gated community, the club house stands out with full amenities, including a gold-class theatrette.

Another first is the 4.5-acre private water park that features a children's play area complete with slides and adventure rides, massage pavilions and an infinity pool.

Landscaped gardens surround and outline the towers which add to the lush, resort quality.





make a splash or go with the flow,

the beach pool is one of many options

THE SPACE WITHIN

Standing tall at this prime location, 18 East at Andaman is the premium tower that offers the best ocean views.

It houses 210 units which feature 8 layout and design options. These range in size from 877 square feet for the 1-bedroom unit, to the penthouse that offers a generous 4,813 square feet of your very own personal space.

There are more 2- and 3-bedroom units available in 18 East at Andaman to cater for every family's space and lifestyle needs.

Residents of 18 East at Andaman can gain direct access to and from the tower via a dedicated entrance and lobby, providing for greater security and privacy.





FITTINGS & FINISHES

Every unit has been exquisitely designed for the discerning home owners who deserve the best.

The architects and interior designers have selected choice materials such as hardwood flooring and granite kitchen countertops.

Only the most-trusted brands and award-winning designs for kitchen appliances and bathroom fixtures are used in the units of 18 East at Andaman.





life's a breeze by the ocean,

come home to 18 east at andaman



ABOUT THE E&O GROUP

The E&O Group (Eastern & Oriental Berhad) is a company listed on Bursa Malaysia with an established reputation as a premier lifestyle property developer of exclusive addresses for the discerning.

In Kuala Lumpur, E&O's landmark properties include The Mews, St Mary Residences, Dua Residency, Idamansara and Seventy Damansara, all located in the most prime and prestigious neighbourhoods of the capital city.

In Penang, the award-winning Seri Tanjung Pinang (STP) is the island's first masterplanned seafront development that is now a highly sought-after and thriving community to locals as well as expatriates from over 20 nationalities. Reclamation of the second phase of STP started in 2016 and is on-going.

In Johor's southern development corridor of Iskandar Malaysia, E&O has embarked on Avira, a 207-acre

development within Bandar Medini Iskandar that has easy accessibility to the Second Link connection to Singapore.

In its expansion overseas, E&O's international foray into real estate investment and development is focused within prime locations in London, including Princes House along Kingsway, ESCA House in Bayswater, and a commercial property in Hammersmith.

E&O's leading position as a lifestyle developer is anchored by its niche in luxury hospitality derived from its namesake, the iconic Eastern & Oriental Hotel, a cherished heritage landmark in George Town established in 1885. The Group has further leveraged on its experience and expertise in hospitality management with the opening of E&O Residences serviced apartments in Kuala Lumpur.

Group Partners

MALAYSIA Sime Darby Corporation | Khazanah Nasional | CIMB Real Estate **SINGAPORE** Temasek Holdings
Mapletree Dextra **JAPAN** Mitsui Fudosan Residential **KINGDOM OF BAHRAIN** Al Salam Bank of Bahrain

Group Consultants

MALAYSIA GDP Architects **USA** WATG Wimberly Allison Tong & Goo | GCH Geyer Coburn Hutchins



LIVING IN PENANG



Penang's distinct character stems from its role as a trading port linking East and West, and the rich mix of people from diverse backgrounds who, over generations, made the island their home.

No other city in Southeast Asia can speak to Penang's history, vividly displayed in architecture and multi-cultural character.

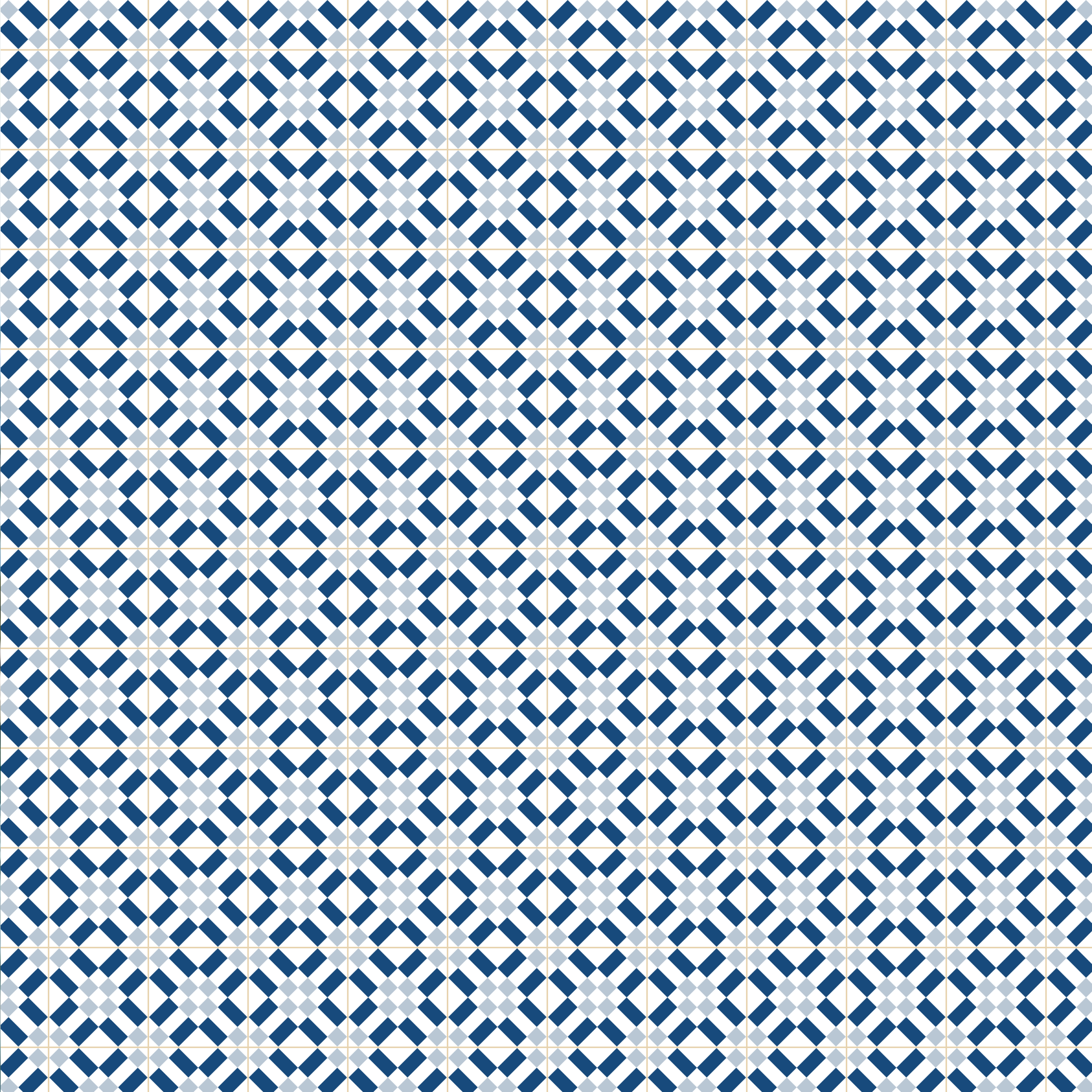
Penang's most prominent cultural influence is that of the Chinese. Between the Straits-born Chinese families and the 167 registered Chinese clans, there is a distinct oriental identity and flavour all across the island.

In 2008, the capital city of George Town was named a UNESCO World Heritage Site.

Today, Penang enjoys a robust economy that brings in the highest levels of foreign direct investment into Malaysia. The island also has the highest growth rate of air travelers, and contributes 70% to the local medical tourism sector.

From Seri Tanjung Pinang, your desired destination is only minutes away, be it the tranquil beaches or the buzzing urban city. It is all part of what gives Penang a charm that is very much its own, and food that is world famous.







EASTERN & ORIENTAL BHD (555-K)

PENANG

Seri Tanjung Pinang

Tanjung Tokong

10470 Pulau Pinang, Malaysia.

T +604 890 9999 F +604 899 1122

KUALA LUMPUR

Head Office

Level 3A (Annexe), Menara Milenium

8 Jalan Damanlela, Damansara Heights

50490 Kuala Lumpur, Malaysia.

T +603 2093 8888 F +603 2095 0293

JOHOR

1 Jalan Medini Timur 15

Bandar Medini Iskandar

79250 Iskandar Puteri

Johor Darul Takzim, Malaysia.

T +607 509 6868 F +607 509 7878

LONDON

13th Floor, Landmark House

Hammersmith Bridge Road

Hammersmith, London W6 9DP

United Kingdom

T +44 (0)203 837 0000

DEVELOPER

E&O Property (Penang) Sdn Bhd (185302-X)

A subsidiary of Eastern & Oriental Bhd (555-K)

www.quaysideresort.com

The information contained herein is subject to change and cannot form part of an offer or contract. All pictures, sketches and illustrations here are artist's impressions only and are not intended to be representations of fact. Whilst every reasonable care have been taken in providing this information, the developer shall not be held responsible for any inaccuracies and changes as may be required by the authorities. Prospective purchasers are advised to read the terms and conditions of the sales and purchase agreement carefully with regards to the common facilities / services and the design layout plans before signing the sales and purchase agreement.

Weibo



WeChat



E&O Living

