




THE  
**tamarind**

**EXECUTIVE APARTMENTS**  
at Seri Tanjung Pinang

by





## DREAM IT, LIVE IT

Imagine living at the centre of it all.  
An address that places you at the very heart of the  
lifestyle you want to lead. Make a home in Penang's  
most desirable neighbourhood, Seri Tanjung Pinang,  
brought to you by the E&O Group.

Discover The Tamarind, your nest to fill with love and loved ones,  
aspirations and inspirations, journeys and milestones.





## YOUR SPACE, YOUR STYLE

Practical layouts and mindful designs make the perfect canvas to express your style and individuality.

Units are bright and airy with generous balconies. All apartments feature 3 bedrooms and 2 bathrooms, and sizes start at 1,047 square feet, promising spacious and carefree living.





## A PLACE TO CALL HOME

Living, dining and bedroom floors are tastefully laid out with wide timber parquet, adding a warm and cosy touch. Within each unit, finishings have been chosen with a discerning eye, ensuring a touch of style in even the smallest of details.

Every unit comes with a dry kitchen and the option for a separate wet kitchen that caters to Asian cooking. All bathrooms are delivered fixed with matching sinks, toilets and fittings.

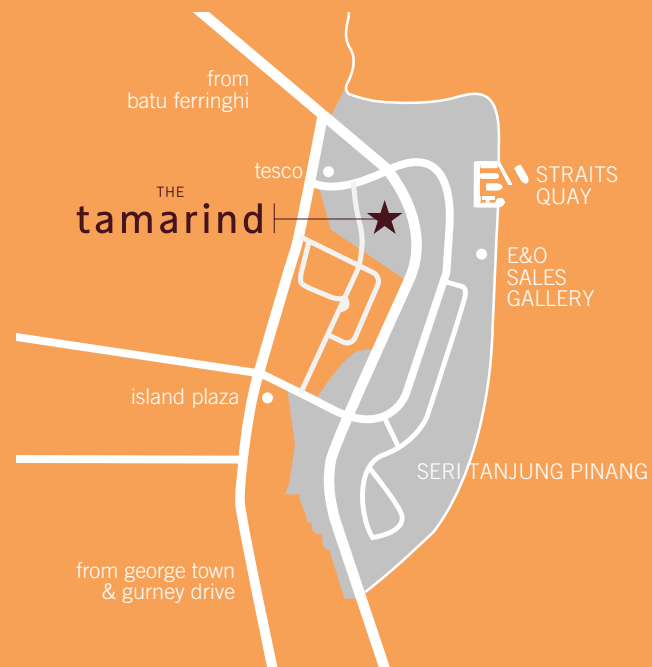


## THE LOCATION

Located between the beaches of Batu Ferringhi and the lively bustle of Gurney Drive, The Tamarind is conveniently situated within walking distance to the Straits Quay retail marina, Straits Green playground by-the-sea® and Tesco.

It is also well connected by strategic access roads to many amenities including schools, medical centres and shopping malls.

Comprising two towers of 552 units each, The Tamarind sits on 7 acres of freehold land featuring lush landscaping for families of all sizes.







## BREATHE, REST, PLAY.

Spaces here are created for sharing. The Waterscape is a unique feature of swimming pools and water play areas to inspire laughter and fun. Spend blissful weekends between the beach and signature pools, complete with sand and accompanying sea breezes.

A customised kids crèche and a fun, outdoor playground are perfect spaces for children to play safely and creatively.





## THE FACILITIES FLOOR

From evening runs along the jogging track, to sunny days splashing around the pool; working up a sweat in the gym or yoga centre, to barbeques with loved ones, The Tamarind has something for every aspect of your life.

### THE FACILITIES

1. Jogging Track
2. Barbeque Plaza
3. Swimming Pool
4. Wading Pool
5. Beach Pool
6. AI-fresco Function Area
7. Terrace, Gym & Yoga Centre
8. Kids Crèche & Multipurpose Hall
9. Kid's Outdoor Play Area
10. Convenience Store



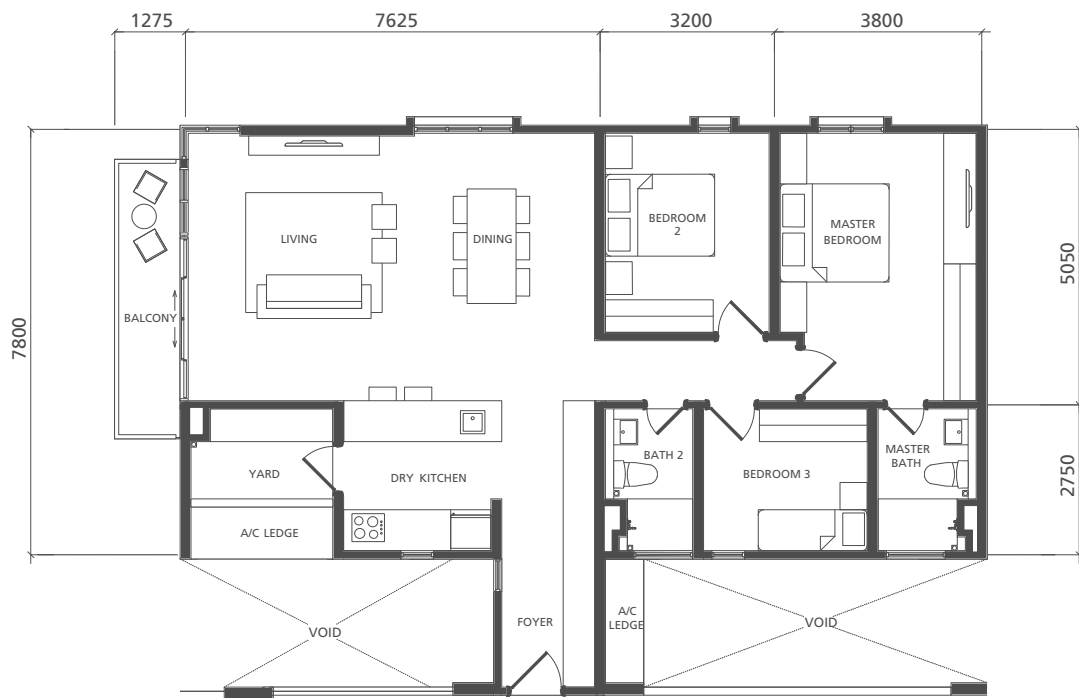
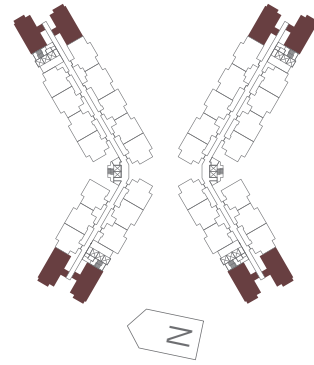


FLOOR PLANS  
&  
SPECIFICATIONS



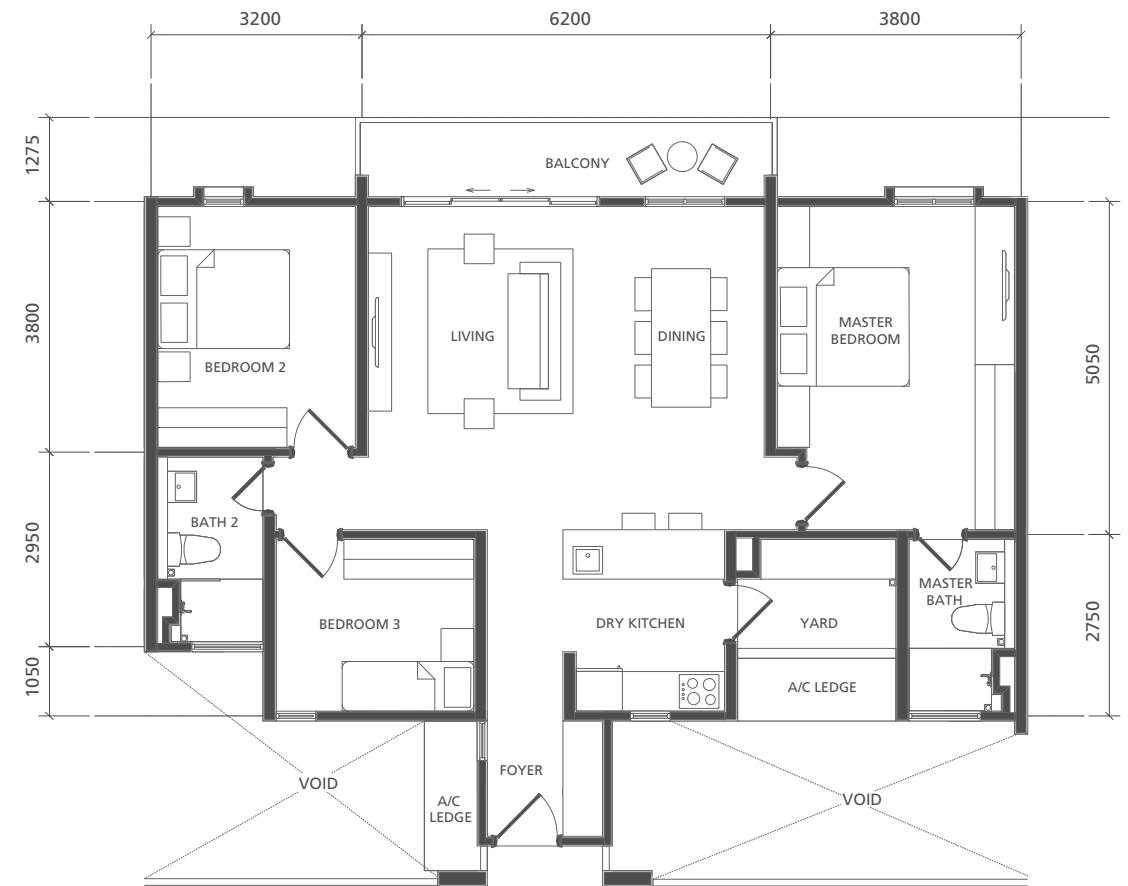
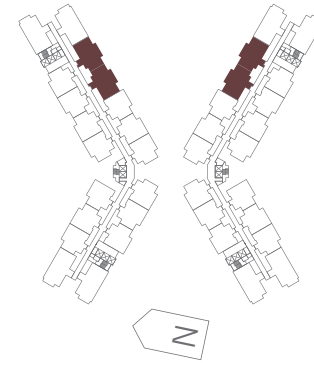
# TYPE A

Typical Size: 1,372 sqft / 128 sqm



# TYPE B

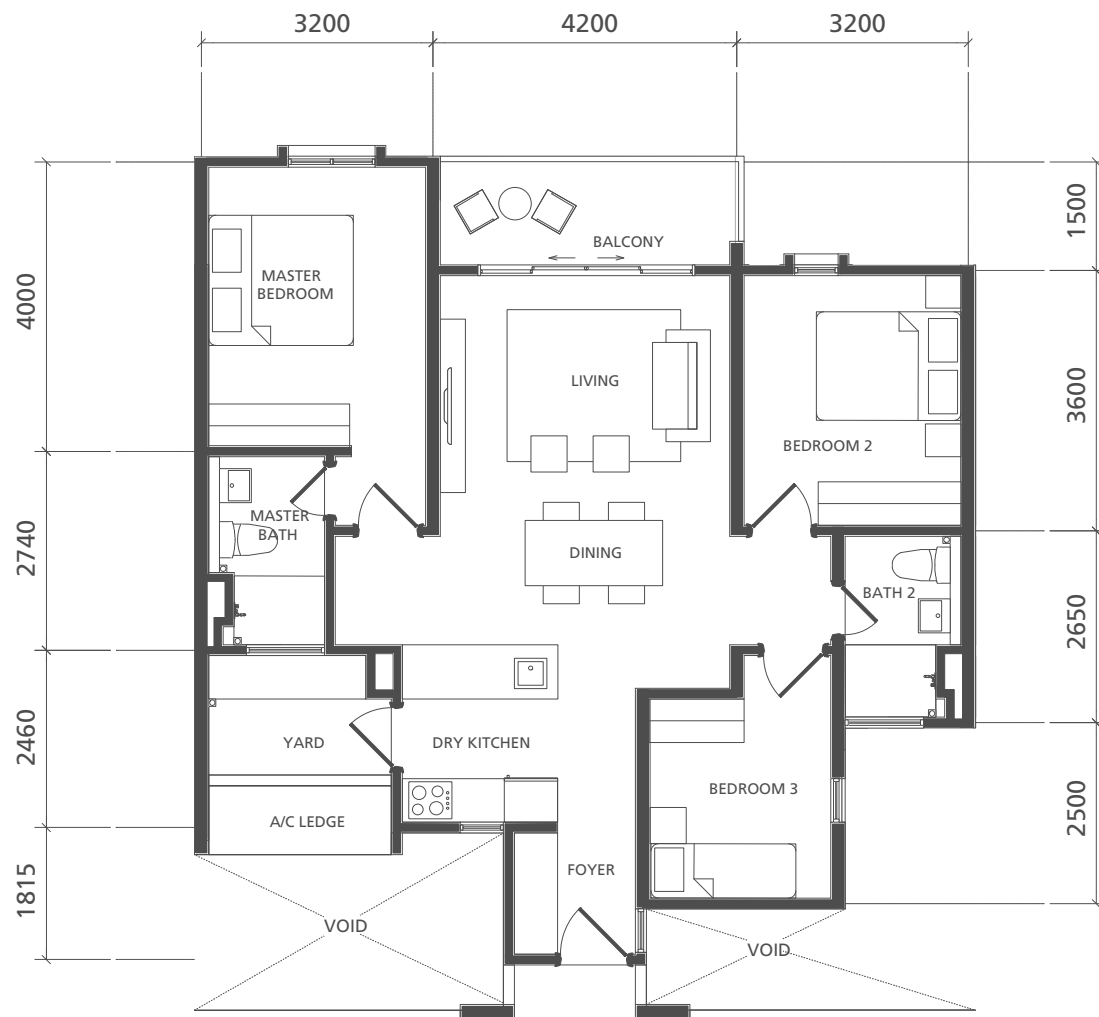
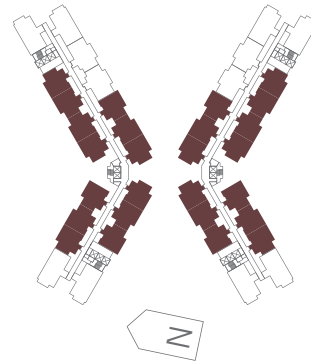
Typical Size: 1,241 sqft / 115 sqm





## TYPE C

Typical Size: 1,047 sqft / 97 sqm



## UNIT SPECIFICATIONS

STRUCTURE	Reinforced concrete
WALL	Brick / concrete
ROOFING	Not applicable
CEILING	Fibrous plaster / skim coat & paint
WINDOWS	Powder-coated aluminium framed glass
DOORS	Main Door : Solid timber door Others : Semi core timber doors Balcony : Powder-coated aluminium framed glass door
IRONMONGERY	Quality locksets
FLOOR FINISHES	Living/Dining, All Bedrooms : Timber Parquet Foyer/Dry Kitchen, All Bathrooms : Tiles Yard & Balcony : Tiles Air-cond Ledge : Cement rendered
WALL FINISHES	All Bathrooms : Tiles Others : Plaster & paint
SANITARY INSTALLATIONS & FITTINGS	All Bathrooms : Water closet & wash basin with fittings
M&E INSTALLATIONS & FITTINGS	3-phase power supply Ceiling fan points to Living, All Bedrooms SMATV outlets to Living & Master Bedroom Telephone outlets to Living & Master Bedroom Adequate light & power points A/C points to Living/Dining, All Bedrooms Door bell point



## LIVE THE LIFE

Located at the northern tip of Penang is Seri Tanjung Pinang, the island's real estate gem, a sought-after address of remarkable residences and retail development. Masterplanned by award-winning developer Eastern & Oriental Berhad, this outstanding world-class seafront development sets the benchmark for modern living by-the-sea®.

Seri Tanjung Pinang is the face of Penang's cosmopolitan mix, with local Penangites, as well as over 20 nationalities from all over the world choosing to call it home.





# E&O PORTFOLIO HIGHLIGHTS

## THE E&O GROUP

The E&O Group (**Eastern & Oriental Berhad**) is a listed company on Bursa Malaysia that has established a reputation as the premier lifestyle property developer of exclusive addresses for the discerning.

In Kuala Lumpur, E&O's landmark properties include **St Mary Residences**, **Dua Residency**, **Idamansara** and **Seventy Damansara**, all located in the most prime and prestigious neighbourhoods of the capital city.

In Penang, **Seri Tanjung Pinang** is the island's first award-winning masterplanned seafront development that is now a highly sought-after and thriving community to locals as well as expatriates from over 20 nationalities.

In Johor's southern development corridor of Iskandar Malaysia, E&O has embarked on **Avira**, a 207-acre development within Medini

that has easy accessibility to the Second Link connection to Singapore.

In its expansion overseas, E&O's international foray into real estate investment and development is focused within prime locations in London, including **Princes House** along Kingsway, **ESCA House** in Bayswater, and a commercial property in **Hammersmith**.

E&O's leading position as a lifestyle developer is anchored by its niche in luxury hospitality derived from its namesake, the iconic **Eastern & Oriental Hotel**, a cherished heritage landmark in George Town established in 1885. The Group has further leveraged on its experience and expertise in hospitality management with the opening of **E&O Residences** serviced apartments in Kuala Lumpur.



St Mary Residences,  
Kuala Lumpur City Centre



Dua Residency,  
Kuala Lumpur City Centre



Idamansara,  
Damansara Heights



Quayside Waterpark,  
Seri Tanjung Pinang



Ariza Seafront Terraces,  
Seri Tanjung Pinang



Princes House,  
London





EASTERN & ORIENTAL BERHAD (555-K)

## **PENANG**

The Sales Gallery & Show Units  
Seri Tanjung Pinang,  
Tanjung Tokong

10470 Pulau Pinang, Malaysia

T 604 890 9999

E [eeopenang@easternandoriental.com](mailto:eeopenang@easternandoriental.com)

[www.seritanjungpinang.com](http://www.seritanjungpinang.com)

## **KUALA LUMPUR**

Head Office & Sales Gallery  
Level 3A (Annexe), Menara Milenium  
8 Jalan Damanlela, Damansara Heights  
50490 Kuala Lumpur, Malaysia

T 603 2093 8888

E [eeokl@easternandoriental.com](mailto:eeokl@easternandoriental.com)

[www.easternandoriental.com](http://www.easternandoriental.com)

## **JOHOR**

Avira Sales Gallery  
1 Jalan Medini Timur 15  
Bandar Medini Iskandar Malaysia  
79250 Iskandar Puteri

Johor Darul Takzim, Malaysia

T 607 509 6868

E [eeojb@easternandoriental.com](mailto:eeojb@easternandoriental.com)

## **LONDON**

Eastern & Oriental PLC  
13th Floor, Landmark House  
Hammersmith Bridge Road,  
London W6 9DP  
England, United Kingdom

T 44 0 203 837 0000

E [enquiry@princeshouselondon.com](mailto:enquiry@princeshouselondon.com)

## **DEVELOPER**

E&O Property (Penang) Sdn Bhd (185302-X)  
a subsidiary of Eastern & Oriental Bhd (555-K)

[www.thetamarindpenang.com](http://www.thetamarindpenang.com)



E&O Living | [eolving](https://www.eolving.com)

The information contained herein is subject to change and cannot form part of an offer or contract. All pictures, sketches and illustrations here are artists' impressions only and are not intended to be representations of fact. Whilst every reasonable care has been taken in providing this information, the developer shall not be held responsible for any inaccuracies and changes as may be required by the authorities.

Developer: E&O Property (Penang) Sdn Bhd (185302-X), The Sales Gallery & Show Units, Seri Tanjung Pinang, Tanjung Tokong, 10470 Penang, Malaysia. DL No: 9411-37/05-2018/01424(L) (30/5/2017-29/5/2018) AP No: 9411-37/05-2018/01424(P) (30/5/2017-29/5/2018), 1,104 units, Approving Authority: Malis Bandaraya Pulau Pinang (Ref No: MPPP/OSC/PB(6893/14(LB))), Tenure: Freehold, Expected Completion: May 2019, Land Encumbrances: N/A, Property Type: Service Apartment, Prices: Min RM899,600.00 Max RM2,163,200.00.