



PRINCES HOUSE  
LONDON

FLOOR PLANS &  
SPECIFICATIONS

| private  
residences

# YOUR CITY SPACE

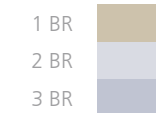
Princes House offers a wide array of living configurations to suit your needs. Each residence features engineered timber floors, carpeted bedrooms and fully-fitted bathrooms.

Strategically placed general lighting and a kitchen equipped with the latest appliances complete the contemporary interior.





- 501** 1 BEDROOM  
total area 49.9 sq m | 537 sq ft
- 502** 1 BEDROOM  
total area 39.8 sq m | 428 sq ft
- 503** 1 BEDROOM  
total area 40.7 sq m | 438 sq ft
- 504** 2 BEDROOM  
total area 73.2 sq m | 788 sq ft
- 505** 3 BEDROOM  
total area 105.9 sq m | 1,140 sq ft
- 506** 2 BEDROOM  
total area 63.4 sq m | 682 sq ft
- 507** 2 BEDROOM  
total area 67.3 sq m | 724 sq ft



# LEVEL FIVE



**601** 2 BEDROOM  
total area 82.5 sq m | 888 sq ft

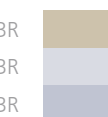
**602** 1 BEDROOM  
total area 43.3 sq m | 466 sq ft

**603** 2 BEDROOM  
total area 100.1 sq m | 1,077 sq ft

**604** 3 BEDROOM  
total area 108.4 sq m | 1,167 sq ft

**605** 2 BEDROOM  
total area 65.8 sq m | 708 sq ft

**606** 2 BEDROOM  
total area 68.2 sq m | 734 sq ft



# LEVEL SIX



**701** 3 BEDROOM  
total area 98.9 sq m | 1,065 sq ft

**702** 3 BEDROOM  
total area 114.1 sq m | 1,228 sq ft

**703** 3 BEDROOM  
total area 131.8 sq m | 1,419 sq ft

**704** 3 BEDROOM  
total area 116.9 sq m | 1,258 sq ft

3 BR 

# LEVEL SEVEN



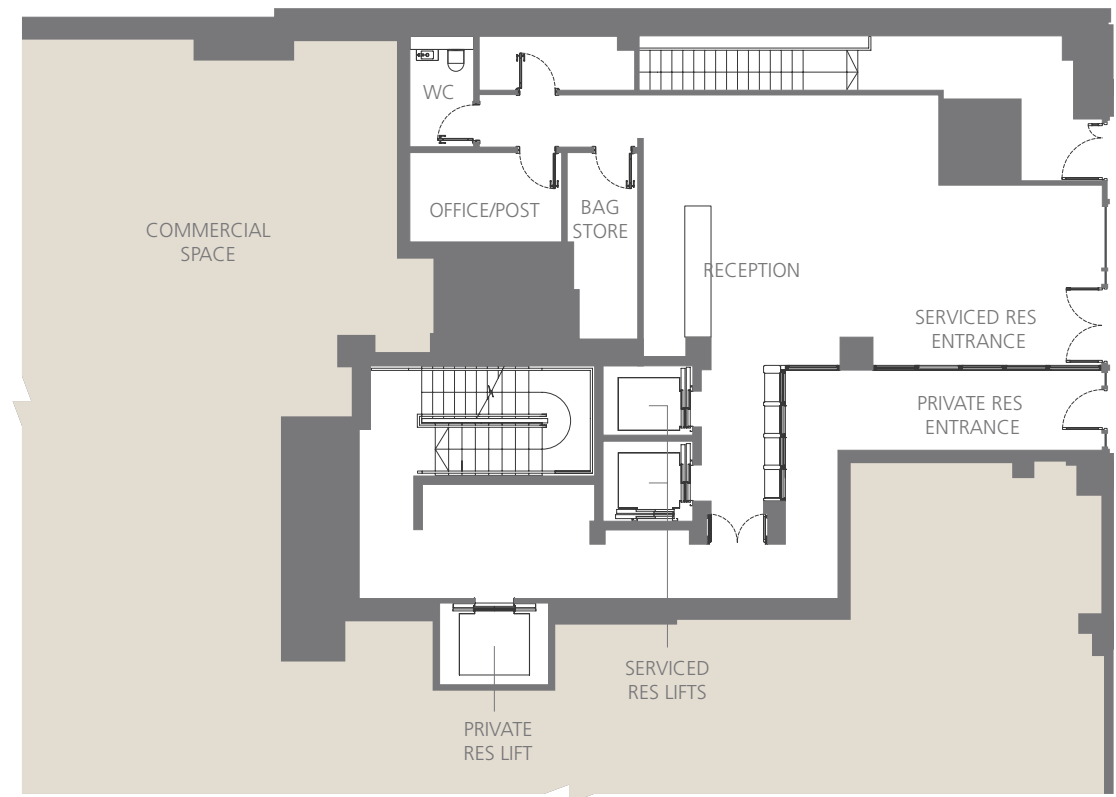
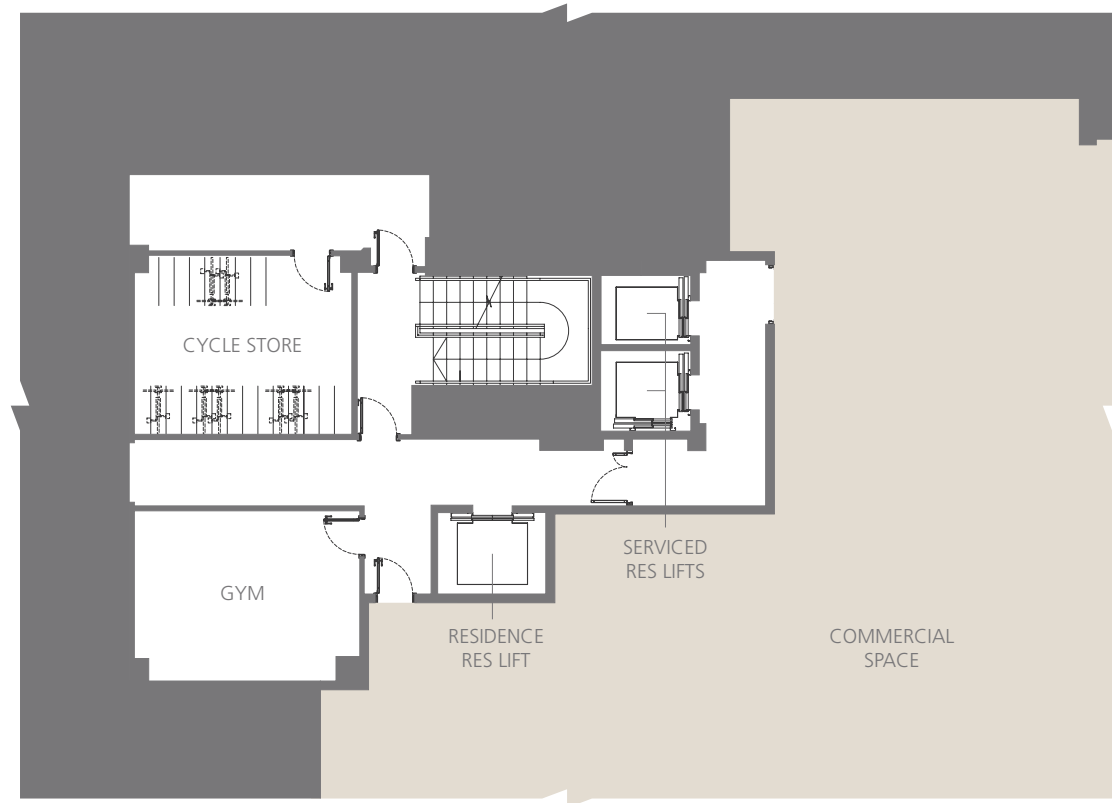
**801** 3 BEDROOM  
total area 98.7 sq m | 1,062 sq ft

**802** 3 BEDROOM  
total area 114.7 sq m | 1,235 sq ft

**803** PENTHOUSE  
total area 252.1 sq m | 2,714 sq ft

3 BR  
PENTHOUSE

# LEVEL EIGHT



BASEMENT LEVEL

GROUND LEVEL

# SPECIFICATIONS

## STRUCTURE

steel structure with hollow pot and concrete slabs

## WALL

plasterboard and paint

## ROOFING

only applicable to private apartments 801, 802 and 803

## CEILING

plasterboard and paint

## WINDOWS

powder coated aluminium framed glass

## DOORS

front door | fire rated veneered timber  
internal doors - hinged & sliding | sprayed white with timber core

IRONMONGERY | stainless steel lever handle.

## FLOOR FINISHES

living room | timber engineered timber board  
bathrooms | porcelain tile  
bedrooms | carpet

## WALL FINISHES

bathroom and powder room | tile and paint  
elsewhere | paint

## SANITARY INSTALLATION & FITTINGS

master bathroom | shower, wc, washbasin with fittings and accessories  
powder room | wc, washbasin with fittings

## KITCHEN APPLIANCES & FITTINGS

appliances | microwave, hob, extractor, fridge, oven, washer and dryer  
fittings | sink and tap

## M&E INSTALLATION & FITTINGS:

shaver point to master bathroom  
tv outlet to living and master bedroom  
adequate light and power points  
data outlets

Princes House, 37-39 Kingsway, London, WC2B 6TP



EASTERN & ORIENTAL BHD (555-K)

### LONDON

13th Floor, Landmark House  
Hammersmith Bridge Road, Hammersmith  
London W6 9DP, United Kingdom

T 44 (0)203 837 0000

E enquiry@princeshouselondon.com

### KUALA LUMPUR

Level 3A (Annexe), Menara Milenium  
8 Jalan Damanlela, Damansara Heights  
50490 Kuala Lumpur, Malaysia

T 603 2093 8888

W www.princeshouselondon.com

The information contained herein is subject to change and cannot form part of an offer or contract. All pictures, sketches and illustrations here are artists' impressions only and are not intended to be representations of fact. Whilst every reasonable care has been taken in providing this information, the developer shall not be held responsible for any inaccuracies and changes as may be required by the authorities. Prospective purchasers are advised to read the terms and conditions of the sales and purchase agreement carefully with regards to the common facilities/services and the design layout plans before signing the sales and purchase agreement.





E&O

EASTERN & ORIENTAL  
BERHAD

[www.easternandoriental.com](http://www.easternandoriental.com)