

E&O

EDITION

ISSUE
26



E&O

EDITION

ISSUE
26

Sunset as seen from the poolside of
The Tamarind, E&O's first executive
apartments development

CHAPTER ONE

- 05

AFTER SUNRISE, BEFORE SUNSET

Inspiring scenes of seafront living at Seri Tanjung Pinang
- 09

WHAT MY HOME MEANS TO ME

Three residents show us the one thing that best represents their home

CHAPTER TWO

- 13

LOOKING EAST

18 East, Andaman at Quayside blurs the lines between an urban abode and a seaside escape
- 20

DREAM HOMES FOR YOUNG FAMILIES

The Tamarind marks the debut of executive apartments by E&O
- 31

COSMOPOLITAN CHIC

City slickers with discerning taste will appreciate the fine details at The Mews
- 35

WELCOME TO THE CLUB

Avira Garden Terraces' new Clubhouse brings the community closer
- 38

YOUR GUIDE TO DINING AT HOME, STRAITS QUAY STYLE

Fill up your grocery bags and whip up a feast for two or more

CHAPTER THREE

- 41

NEW LOCATION FOR OLD FAVOURITES

Planters Lounge at E&O Hotel is now open to the public for Sunday Roast and Afternoon Tea
- 44

LEADING THE WAY

Alison Fraser on being the E&O hotel's first female General Manager and gives us a sneak peek into what's new at the Heritage Wing
- 50

LET THE GOOD TIMES ROLL

Celebrate the arts, from George Town Festival all the way through Christmas
- 52

A RIVER RUNS THROUGH

Some of Bangkok's most exciting landmarks sit on the banks of the Chao Phraya river

E&O EDITION

All materials published remain the property of Eastern & Oriental Berhad. No part of this publication may be reproduced, stored in a retrieval system, or transmitted in any form nor by any means – graphic, electronic, mechanical, photocopying, recording – without prior written permission of the publisher. Every effort has been made to ensure the credits accurately comply with the information supplied.

CHAPTER
ONE

AFTER SUNRISE, BEFORE SUNSET

The best of seafront living is captured in these inspiring images at Seri Tanjung Pinang.

STRAITS QUAY MARINA

Penang’s first and only seafront retail marina combines many of life’s best offerings. The marina has 40 pontoon berths that can accommodate boats ranging from 10m to 25m in length. Advance reservations are recommended as the marina is popular among seafarers heading to Penang. Once berthed, step off your boat and within a few

easy steps, you will be faced with a plethora of options to make the most of your days. Dine on international cuisine, get a relaxing massage at an award-winning spa, watch world-class performances at penangpac or join a fun pewter-making workshop at Royal Selangor’s School of Hard Knocks.

*“To reach a port
we must set sail –
Sail, not tie at anchor
Sail, not drift.”*

– **Franklin D. Roosevelt,**
32nd U.S. President



**ARIZA SEAFRONT TERRACES
AND AMARIS TERRACES BY-THE-SEA**

These two properties within Seri Tanjung Pinang share two standout features: Both are modelled after traditional Chinese courtyard homes that were *de rigueur* back in the day and optimise their locale with views of the sea. These sea-fronting units

come complete with designer kitchens that are fully-fitted with appliances, teak floors, marble master bathroom, air-conditioned rooms, hot water in the bathrooms and dry kitchen, and intercom connection to the guardhouse.

*“With every drop
of water you
drink, every breath
you take, you’re
connected to the sea.
No matter where on
Earth you live.”*

– **Sylvia Earle,**
Oceanographer



*Clockwise from top:
The living room
at Ariza; sky view
from the courtyard
at Amaris and the
spacious dining area*

SERI TANJUNG PINANG PROMENADE

Framing the Seri Tanjung Pinang development is a wide promenade that has become a focal point for residents, particularly in the early mornings and evenings. Here, you can walk, run, jog or cycle while enjoying the serenity

and soothing views of the sea. It has become a fixture for those who call this neighbourhood home, creating bonding opportunities for families besides improving wellbeing and overall quality of life.

*“I’ll be happy if
running and I can
grow old together.”*

– **Haruki Murakami,**
author



Photo courtesy of Keat Song



WHAT MY HOME MEANS TO ME

Three residents of Seri Tanjung Pinang reveal the one thing that symbolises the best part about calling this esteemed development their home.

WEEKENDS ARE MADE OF THESE

Tan Keat Keat wasn't on the lookout for a property but his agent approached him with an offer he couldn't refuse and that was how he came to own a unit of Andaman at Quayside. For Tan, the condominium was well priced and offered good value for money. The development also met his other criteria such as safety, good facilities, quality upkeep and maintenance, serene surroundings and wide outdoor spaces.

Tan and his family don't stay here all the time, however. "This is our weekend home," he explains. "During the week, my wife (Angie Ooi) and I stay with our kids in a landed property in another part of Penang. On weekends, we come here to relax and enjoy the facilities." They each have a favourite activity at Andaman. For the kids, the playground and swimming pool are clear winners whereas Angie enjoys working out at the gym. Tan himself loves the outdoor spaces, especially the promenade. One

thing they all enjoy is cycling, together with Angie's mother, Madam Tang.

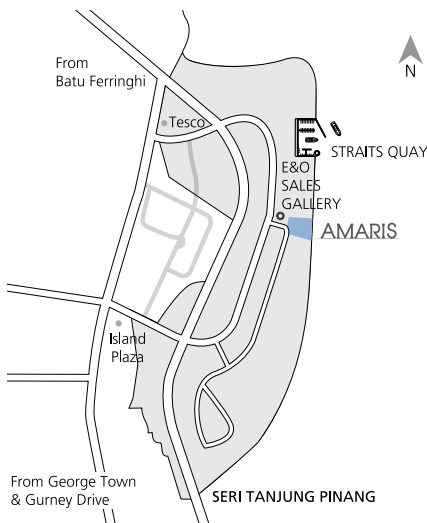
The community events at Seri Tanjung Pinang are another of their pastime and Tan had participated in a terrarium-making workshop last Christmas. The terrarium, he says, represents his home at Andaman because "it can sustain itself with little care. Just like my condominium here. I can leave it all week and on weekends when I come, it's there as I left it and in good condition."



Tan Keat Keat and his family enjoy their Andaman At Quayside condominium as a weekend home

AMARIS

TERRACES BY-THE-SEA®



OLD WORLD CHARM, NEW WORLD CONVENIENCES

Designed for tropical living, the Amaris Terraces By-The-Sea® is the final set of landed properties within the first phase of the Seri Tanjung Pinang seafront masterplanned development, Penang's most desirable neighbourhood.

Highly coveted, Amaris homes open up to sea views with internal courtyards reminiscent of gracious Penang houses of old.

Three-storey high with private elevators to encourage multi-generational living by the sea, Amaris homes range in size from 5,262 square feet for intermediate units to 6,540 square feet for corner units.

Those who know, insist on E&O.

.....

SALES GALLERY & SHOW UNITS OPEN DAILY FROM 10AM - 6PM

Seri Tanjung Pinang, Tanjung Tokong, 10470 Penang, Malaysia

T 604 890 9999 **F** 604 899 1122

SERI TANJUNG PINANG
PENANG • MALAYSIA

E&O Living Seri Tanjung Pinang by E&O www.seritanjungpinang.com

THE CYCLE OF LIFE

“I’ve always loved cycling but hadn’t had the chance to do so for a long time until I moved to Seri Tanjung Pinang,” said Madam Tang Yin Kham with a big smile, nodding at the miniature bicycle she had brought. It’s a replica of the all-black postman bicycles that were once a common mode of transportation in Malaysia, and she had hunted high and low for it. It’s the first of what she hopes will become a collection as it represents something that truly brings her joy.

“I grew up in Sungai Petani, Kedah and learned to ride when I was in Standard 4 or 5,” she recalls. “I used to cycle to school...since leaving school, I haven’t had the chance to ride regularly—until now!” Madam Tang moved into her Amaris Terraces-By-The-Sea home last year with her mother and her younger son. The neighbourhood’s quiet roads, open spaces and most notably, the promenade, provide her with ample opportunities to take her bicycle out for a spin on weekends.

She even cycles to Straits Quay on Saturdays, when she and her family gather for dinner. When not biking, she enjoys evening walks with her mother and generally soaking in the calm, peaceful environment of the neighbourhood. “I can say that I have a much better quality of life since moving here, I sleep so well now!”



*Moving to
Seri Tanjung Pinang
has enabled Madam
Tang to return to her
first love: cycling*

ON THE MOVE

Photographer Song Boon Keat splits his time between Kuala Lumpur and his hometown of Penang, in between travelling overseas for work. While he actually spends more time in the Malaysian capital, his heart remains in Penang so when it came to investing in a home, he didn’t have to look far.

Ariza Courtyard Terraces appealed to him because it is a gated and guarded development with a safe environment. “To me, it’s not just about buying a house but you’re buying into the whole community.” He liked that Ariza houses come with a

bedroom on the ground floor, which is ideal for elderly folks, and Song had planned for his parents to live with them once the house was complete.

“When I bought the house, I felt that it was the best that I could do for my parents, even though initially I had concerns about it being out of my budget. But it was ideal and I wanted to let my parents enjoy the restful environment.” The ease of access around Seri Tanjung Pinang was another winning factor. As Song’s mother has difficulty walking, he was going to get a buggy for his father to ferry her around

when needed. Sadly, his father passed on from cancer before they could move in. His mother has chosen to continue staying at her own house and occasionally visits them.

Things may not have worked out exactly as he wished but Song has still found his “home sweet home” at Seri Tanjung Pinang (he even named their family WhatsApp group chat that!). In place of a buggy, he got himself an e-scooter and that’s what represents his home to him: Safe, easy and convenient.



*Song Boon Keat’s
favourite feature
of Seri Tanjung
Pinang is the ease of
moving around*

CHAPTER

TWO

LOOKING EAST

Wake up to stunning ocean views at 18 East, Andaman at Quayside, an upscale resort-style condominium named after its geographical coordinates.

A full decade after E&O first revealed its Seri Tanjung Pinang master plan development, in 2005, the final tower that completes Andaman at Quayside welcomed its first home owners. 18 East, located at Penang's northeastern cape, was launched to great excitement and now, four years later, it continues to uphold E&O's reputation as a boutique lifestyle developer.

Feast on ocean views from the comfort of your living room



There are indeed many causes for celebration at 18 East. As part of Andaman at Quayside, residents of 18 East also enjoy access to a 4.5-acre private waterpark, five acres of green recreational space and a host of other world-class facilities.

18 East blurs the boundaries between an urban home and a seaside resort





Quayside Seafront Resort Condominiums, Gold winner of the EdgeProp Malaysia's Best Managed Property Awards 2018.

Feel the breeze

The last of the towers in the most prime of locations – **18 East, Andaman at Quayside** at Seri Tanjung Pinang – is a premium reserve collection of exquisitely-appointed residences, with dedicated entrances and personalised privileges, set within a completed 4.5 acre waterpark. Each of the one-, two- and three-bedroom units have exceptional views – the ocean, the hills or Gurney Drive – take your pick. Review your day, or plan the next from your lofty, comfortable perch in the sky. Home is everything you dreamed it would be.

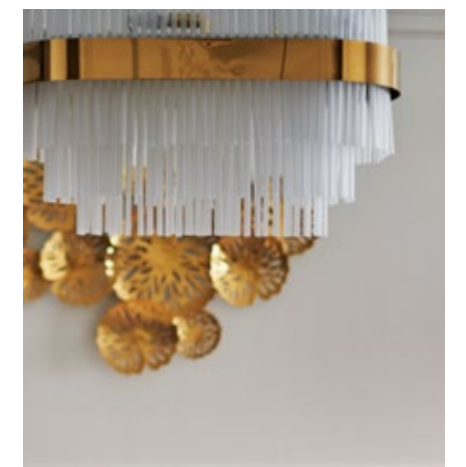
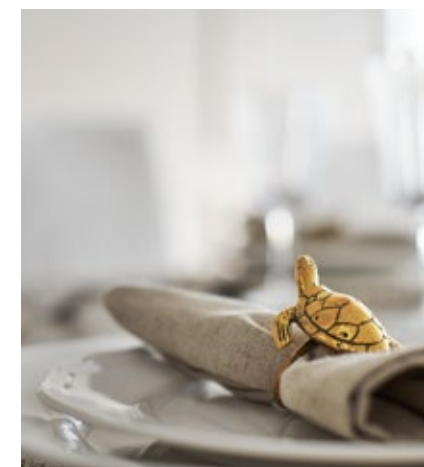
Quayside

SEAFRONT RESORT CONDOMINIUMS



Limited units of your dream home are now available.
Gallery viewing by appointment only.

Seri Tanjung Pinang, Tanjung Tokong, 10470 Penang, Malaysia.
T +604 890 9999 / +6013 408 8999
E eoopenang@easternandoriental.com



*From furnishings to
the smallest fittings,
every 18 East home
personifies great
attention to detail*

In total, there are 210 one- to three-bedroom units with built-ups that range from 877 sq ft to 4,351 sq ft. Each unit has several vantage points that afford breathtaking views of the ocean, creating a serene, restful vibe that easily transports the

mind and soul to an idyllic island. Indeed, 18 East brings together the contemporary chic of a plush urban home with the paradisiacal touches of a luxurious seaside resort. This is the pinnacle of seafront living in Malaysia.



Every section of the 18 East home is designed for living life to the fullest



DREAM HOMES FOR YOUNG FAMILIES

E&O adds executive apartments to its portfolio with the completion of The Tamarind at Seri Tanjung Pinang.

Targeted at young families and aspiring professionals, this newest development by E&O is made up of 1104 units of freehold executive apartments housed in two 33-storey towers. A stone's throw from

Straits Quay, it places residents within easy walking distance of multiple conveniences and a short drive from schools, medical centres and shopping malls.



The newest addition to Seri Tanjung Pinang, The Tamarind comprises two 33-storey towers of executive apartments



All units at The Tamarind feature three bedrooms and two bathrooms, with a built-up area of 1,047 sq ft. Conceived for carefree living and flexibility, the spacious apartments boast practical layouts and mindful designs that let homeowners express their individual style. Every unit has a balcony with views over the Seri Tanjung Pinang neighbourhood.

The Waterscape combines swimming pools, water play areas and a children's playground



It's easy to stay active when living at The Tamarind; besides a well-equipped gymnasium, there's also a jogging track and a Yoga Centre.



The gymnasium is fitted with a good range of equipment to let you have a comprehensive workout

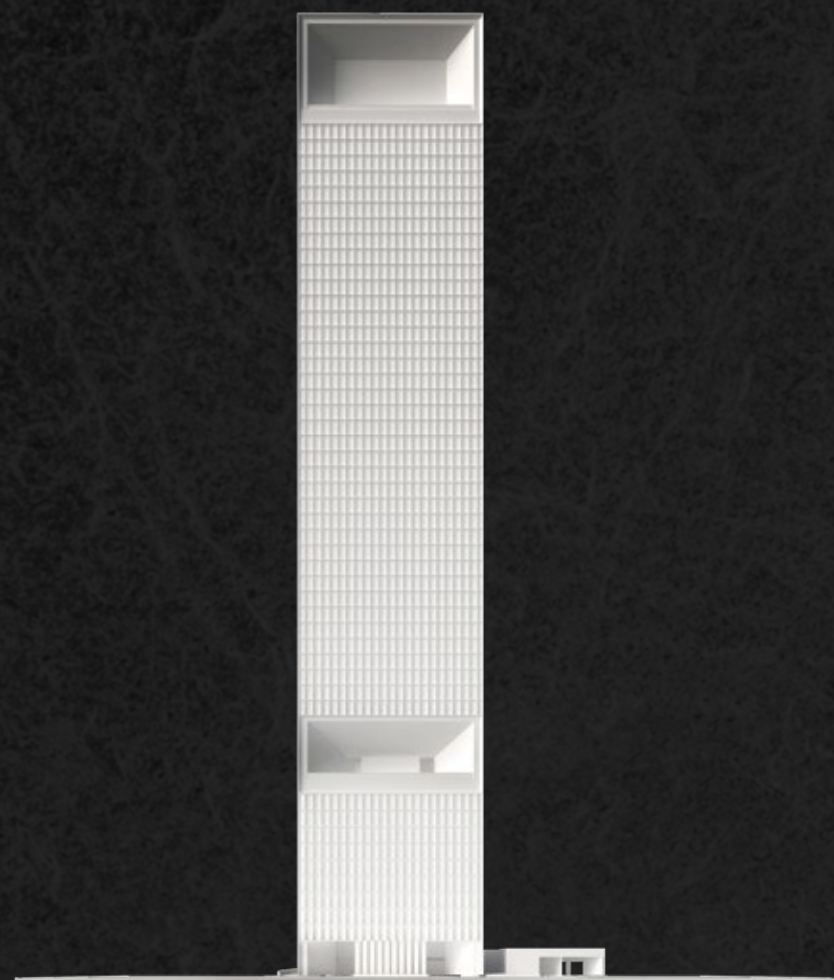


Residents will find everything they need on the Facilities Floor, where they have full access to a jogging track, barbeque plaza, al fresco function area, kids crèche and multipurpose hall, kids’ outdoor play area, and terrace, gym and yoga centre. The star feature is the 1-acre Waterscape, with no less than three swimming pools (signature landscaped pool, wading pool, and beach pool) and water play areas.



*The Kids Crèche
and Multi-purpose
Hall look out to the
Waterscape*





THE BEAUTY OF CONLAY IT'S WHAT YOU DON'T SEE

E&O's reknown hospitality and craftsmanship,
woven into Kerry Hill's finest work in resort and space design.

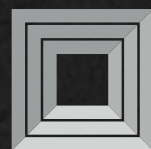
An oasis of luxury in a busy, dynamic world city.
The insightful compromise of luxury and restraint.

The Conlay by E&O.

Register now to be on our priority list for a private preview.

Please contact us for more information +6017 266 1188

www.theconlay.com



CONLAY
KUALA LUMPUR CITY CENTER

An international collaboration between





Here's the key to refinement.

Completed luxury homes await the discerning few.



COSMOPOLITAN CHIC

The Mews Kuala Lumpur's essentials will undoubtedly appeal to well-heeled city slickers.

Imagine an address so strategically situated that it offers all the excitement of living in the heart of the city and, at the same time, being an urban sanctuary at the end of a hectic day. The development is The Mews Kuala Lumpur and its location is but a stone's throw from the heart of Kuala Lumpur. As it stands, the 38-storey twin towers have added a new landmark

in KL's central business district with its architectural rigour, distinctive geometry and lushly landscaped grounds.

This unrivalled home is one of 256 custom-designed units with built-up areas ranging from 922 to 2,619 sq ft in one-, two- and three-bedroom configurations. All units are meticulously detailed with solid

wood floors laid in a classic herringbone design. Each unit is equipped with shoe cabinets, downlights, fans, concealed air-conditioning units, a master bedroom wardrobe, kitchen cabinets and selected electrical appliances. One also finds full bathroom fittings as well as a washer and dryer. For complete convenience, units incorporate Google Home, a smart home



T +6017 266 1188
E enquiry@the-mews.com
www.the-mews.com

The Mews, KLCC
19, Jalan Yap Kwan Seng,
50450 Kuala Lumpur.

An international collaboration between



Witness the mastery of craftsmanship in our newly-completed apartments. Be impressed with the refined design and meticulous details that distinguish this new landmark in the city. Venture to the rooftop sky garden or refresh in the infinity pool as the panorama of Kuala Lumpur unfolds before you.

Limited units available.

- Ready for occupancy
- Furnished 1 Bedroom and 3+1 Bedroom units available
- Sizes between 925 sq ft – 2615 sq ft
- Priced from MYR1.47mil onwards

Come, let us connect you to the pulse of the city.

system which controls electrical fixtures like lights and air-conditioning through voice commands or from one's smartphone.

Award-winning design practice Palladio Interiors has transformed the single-room unit into a sleek modern space with mid-century touches and brass accents, the kind of home that's ideal for an urbane sophisticate. Living and dining spaces blend into a seamless whole, abetted by furniture and finishings in neutral shades while pops of royal blue and mustard add interest. Geometric prints and forms are deployed in soft textures like rugs and the headboard to achieve a pleasing balance.

Purchasers who are inspired by Palladio Interiors' elegant design may choose to replicate it completely in their single unit. (Another option on offer is by renown designer Omar Khan, whose opulent aesthetics will appeal to those whose tastes run to the glamorous.)

Developed in collaboration with Japan's largest developer, Mitsui Fudosan. The Mews exemplifies E&O's brand values of understated luxury. This philosophy is evident in the development's every feature: from the sixth floor Water Sanctuary which houses lifestyle facilities and an infinity pool, to the 37th floor deck featuring an

open lawn and private gardens, complete with breathtaking 180-degree city views.

E&O has its foundation in the hospitality business with the legendary E&O Hotel in Penang as its bedrock. The company has since evolved into property development but projects still retain that sense of graciousness found in the grande dame of heritage hotels. This is reflected in the provision of an exclusive concierge service and chauffeured shuttle services which will be available to residents of The Mews, a gesture which is a fitting flourish in what is set to be the most desired address in KL's most exclusive neighbourhood.

Smart, sleek and chic, The Mews is a stunning showcase of E&O's take on understated luxury



This article first appeared in Robb Report Malaysia (Nov 2018)





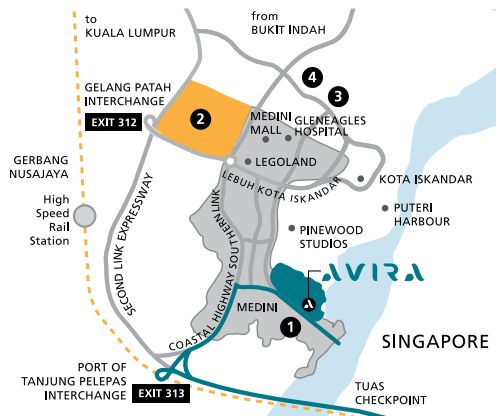
WELCOME TO THE CLUB

The new Clubhouse at Avira Garden Terraces in Bandar Iskandar, Johor is fast becoming a popular meet-and-mingle point for its residents.

There's nothing quite like a dip in the pool or a heart-pumping workout at the gym to complete your day. Residents of Avira Garden Terraces, who have always enjoyed a fairly healthy way of life thanks to the wide, open spaces around their homes that encourage staying active, can now incorporate these leisure and fitness pursuits into their lifestyle. Both these facilities are offered at the Clubhouse,

which opened earlier this year and is for the exclusive use of Avira residents.

For many, the swimming pools are the highlight, and there are two of them. The kids' pool, with a depth of just 0.6m, allows for many hours of splashing good fun while the regular pool measures 30m by 9m, with a depth of 1.2m, so serious swimmers can do their laps. Both are salt water pools.



Nestled within verdant green spaces, AVIRA GARDEN TERRACES enjoys excellent accessibility to EduCity as well as a host of lifestyle and entertainment offerings.

One of the few landed properties in Medini, AVIRA GARDEN TERRACES is built with wide frontages that invite the outdoors in, whilst private courtyards and back gardens flow seamlessly into linear parks.

AVIRA Medini Iskandar, brought to life by Eastern & Oriental Berhad and the wholly-owned subsidiaries of Temasek Holdings (Private) Limited and Khazanah Nasional Berhad.

**LIMITED UNITS OF YOUR DREAM HOME
ARE NOW AVAILABLE.**

Please call +607 509 6868 or +6019 390 1188
for more information.

AVIRA SALES GALLERY

1 Jalan Medini Timur 15, Bandar Medini Iskandar
79250 Iskandar Puteri, Johor Darul Takzim, Malaysia
T +607 509 6868 / +6019 390 1188 E enquiry@avira-medini.com

1. Sunway International School
2. EduCity
 - Newcastle University Medicine
 - University of Reading
 - University of Southampton
 - Management Development Institute of Singapore
 - Netherlands Maritime Institute of Technology
 - Raffles University Iskandar
 - Multimedia University (MMU)
 - Secondary Trust School
3. Raffles American School
4. Marlborough College Malaysia

AVIRA
GARDEN TERRACES

f @ E&O Living Avira Sales Gallery by E&O www.avira-medini.com



The gymnasium, on the other hand, is well-equipped to give you a good total body workout. There's also a weekly yoga class that's taught by one of the residents.

Besides that, there's space for residents to host parties and barbecue dinners, creating

opportunities to foster community spirit. To that effect, in the last few months since it opened, the Clubhouse has hosted a series of gardening workshops that imparted useful information while allowing for quality bonding time.



One of two swimming pools at the Clubhouse, a popular relaxation point for residents of Avira Garden Terraces



YOUR GUIDE TO DINING AT HOME,
STRAITS QUAY-STYLE

In the mood for a fancy dinner or planning a picnic by the pool? Here's our handy guide on what to get. Everything's available at Straits Quay, the retail marina at Seri Tanjung Pinang.

Theme: Fancy Seafood night

Date night doesn't necessarily mean venturing out of the house to look for a good meal. A cosy evening in the comfort of your home, complemented by freshly-cooked food hot off the stove, may be just what the stress doctor ordered at the end of a long work week.

*All ingredients
available at Sam's
Groceria,
3G-G-5*



Theme: Beach Pool Family Picnic
Life's a beach when you have this hearty, wholesome picnic waiting for you after some splashing good times in the pool. For Mum and Dad, coffee will help you stay alert as you watch over your little ones while they snack on cookies and nuts. Freshly-baked organic breads promise to be a treat for the whole family, fuelling you up for more fun in the sun!

*Tom's Farm Honey
Butter Almonds
from K Market,
3H-G-1*

*Butter, cookies &
fresh produce from
Sam's Groceria,
3G-G-5*

*Organic levain
breads (lavender,
pumpkin & focaccia)
from Real Food,
3A-G-13D*

*Handmade monkey
plush dolls,
Emporium at
E&O Hotel*

*Coffee from Full of
Beans, 3H-G-11*



CHAPTER
THREE

NEW LOCATION FOR OLD FAVOURITES

E&O Hotel's long-held traditions of Sunday Roast and Traditional English Afternoon Tea continue at the Planters Lounge, with sea views to boot.

Until recently, it was a private lounge reserved for in house guests of the E&O Hotel, where they could enjoy all-day dining within a quiet and restful atmosphere. The Planters Lounge, located on the sixth floor of the hotel's Victory Annexe, offers both indoor and outdoor seating areas. The former is a statement of refinement that recalls a Victorian-era drawing room whereas the latter looks out over the promenade, affording diners breathtaking sea views.

With the temporary closure of the Heritage Wing due to refurbishment, the Planters Lounge has stepped in to host the hotel's ever-popular Traditional English Afternoon Tea and Sunday Roast. As such, the Lounge is now open to the public to enjoy its stately ambience while indulging in hearty roasts or delicate bites.

The Sunday Roast menu has all the trimmings – roast side of beef, roast chicken breast with sage and onion stuffing, slow-



cooked lamb shoulder, Yorkshire pudding, goose fat roast potatoes, salad, soup of the day, seasonal vegetables, mushy peas, and fresh fruits.

For Afternoon Tea, a refreshed menu offers six varieties of finger sandwiches: Smoked salmon tartare; crab meat slaw; corn-fed chicken ragout; truffle-scented egg; marinated tuna flakes; cucumber, dill and cream cheese. A selection of cakes and tea pastries, organic spinach quiche, and

of course, the quintessential scones (with homemade strawberry and pineapple jams, and clotted cream) round up the tiered offerings.

Wash it down with a cuppa of your choice. Will it be a refreshing Verbena or a rich Vanilla Roibosh? The large-leafed Fancy Sencha is always good as is the smoky Terry Lapsang, or how about the malty Irish Whiskey Cream? Altogether, there are 16 different teas to satisfy tea connoisseurs.



Sunday Roast is priced at RM88.00 nett per person and Traditional English Afternoon Tea at RM71.65 nett per person. For reservations, call 604 222 2000

www.eohotels.com

Tuck into Sunday Roast or enjoy an Afternoon Tea within the stately surrounds of Planters Lounge



LEADING THE WAY

With three decades of experience under her belt, Alison Fraser is a figure to be reckoned with in the hospitality industry. Adding another feather to her already esteemed cap, she made history when she became the first female General Manager of the E&O Hotel this past January. She tells us about her journey in the hotel industry and gives a sneak peek into what the Heritage Wing will offer when it reopens.



Alison Fraser has held key managerial positions at various luxury properties in the UK, Middle East and Asia. In Penang, she is a partner and director of ChinaHouse and Straits Collection.

Q: Tell us how you got started in the hospitality industry and what attracted you to it in the first place. From an early age, when I used to travel with my parents on holidays through Europe, I was always excited about the hotels we stayed in. This was probably the earliest influence I remember, which led me to a career in hotels. I started off during the early 1980s, in London.

Q: You’ve managed some of the biggest hotels in various countries around the world. Please share with us three of your most memorable experiences to date. I have managed a few properties in South East Asia, in particular, and was deputy General Manager of two luxury hotels in London before this.

I opened a luxury boutique property in Ubud, Bali as GM called Puri Wulandari which opened at USD500 per night. Whilst I was doing pre-opening, I used to have to visit and sit cross-legged with the local Banjar Chief to get to know him, with translators in tow. He would entertain us with cans of warm Fanta and



strange cigarettes! After each meeting, he would send me endless resumes of his nieces and nephews in the hope that I would give them jobs.

I ran Carcosa Seri Negara, Kuala Lumpur in 2000, and lived on site above Lake Gardens. One night after a huge function in Seri Negara, the building caught fire – a piece of firework got caught in the eaves of the roof. I was awoken at 3am to the awful sight of the blaze. All I could think about was, “Oh God, what will the Prime Minister say in the morning!” (the Carcosa is a government-owned building)

Running The Andaman, Langkawi from 2002- 2008 gave me a wonderful opportunity to live near the sea on the edge of a rainforest. Besides tourists, my team and I also looked after visits by the heads of state so security was tight, but it was interesting to see guests coming up from the beach and lining up in swimwear to be in close contact with the King of Jordan.

Q: What went through your mind when you were first approached to helm the E&O? At the time, I was so committed with other projects and I thought I couldn’t possibly fit this into my wee. Then, over

time, I realised that I would never have this amazing opportunity again so I cleared my diary indefinitely.

Q: How does it feel to be the hotel’s first female GM in its 134-year history?

I feel really honoured to have been given the baton and to be a custodian of such a property. I feel more women should be running hotels in our industry worldwide so it’s also a message to other ladies that we can do the job as well as men. I heard that one local resident commented that this is a man’s job—I hope to prove them wrong!

When it reopens to guests this December, the Heritage Wing of the E&O Hotel will feature contemporary interiors while maintaining its colonial charm and elegance



Q: What are some of the challenges in managing a hotel of this stature?

There are legacy sensitivities when you take over such a national treasure, and you are balancing finances with the need to improve the hardware and software. These are challenges but they are also a necessary part of my job.

Q: Why did E&O decide to refurbish the Heritage Wing, and when will it reopen? The Heritage Wing had not been touched for a few years and was in need of freshening up. The owners had planned this

over a period of time and last year, it was determined that it really would be timely to do it now. That was nicely planned, as I was just starting at the helm. We aim to relaunch just before Christmas this year.

Q: Besides having Sunday Roast and Traditional English Afternoon Tea at Planters Lounge at the Victory Annexe, what other changes have been put in place while the Heritage Wing is closed? We offer an all-day dining menu at Planters Lounge daily, plus tapas in the early evenings, which is perfect for watching the

sunset with a glass of wine. We also serve romantic set dinners in the evening. Sarkies, on the ground floor, offers wonderful buffets daily for breakfast, lunch and dinner.

Q: What can we look forward to when the Heritage Wing reopens? We are going to take the Heritage Wing to a new level of luxury experience for our guests, with two new food and beverage outlets: Farquhar's Bar and The Cornwallis Exclusive Lounge.

Farquhar's Bar and The Cornwallis Exclusive Lounge are the new F&B outlets at the Heritage Wing



LET THE GOOD TIMES ROLL

From the much-anticipated George Town Festival all the way through to Christmas, there’s no shortage of fantastic entertainment at penangpac.

JULY

**2019 HARP RECITAL WITH
PENANG HARPERS**
7 Jul @ 5.30pm | **stage 2**
Tickets: RM32

Let harpists as young as four enthral you with their wide-ranging repertoire of solo and harp chamber works.

**SYIOK SENDIRI 8
WE’RE BACK, MDFS!**
12 Jul @ 8:30pm | **stage 2**
13 – 14 Jul @ 3pm, 8:30pm | **stage 2**
Tickets: RM45 for Adults, RM35 (students, senior citizens above 60, OKU and TAS card holders)

After a one-and-a-half-year hiatus, this hit Malaysian comedy-variety show returns to the stage with their eighth instalment. What can you expect in the context of “new” Malaysia? A more *pedas* experience, perhaps! As always, expect a no holds barred roller coaster ride with a smidgen of political incorrectness. **Tip:** Take advantage of the Cheapskate’s Special and save RM15 when you get your tickets early to celebrate all things Malaysian. *Marilah!*

FROM BAROQUE TO ROCK
14 Jul @ 3pm | **stage 1**
Tickets: RM45

Enjoy an afternoon of instrumental music presented by Music Specialists, an academy in Penang headed by Peter Lo. Sit back and be lulled by classics by Vivaldi and Dvorak, and contemporary hits by the likes of Ed Sheeran, Bruno Mars, and Billy Joel.

THE STRANGERS
16 – 17 Jul @ 8.30pm | **stage 2**
Tickets: RM40, RM30 (students, senior citizens above 60, OKU). Package for 4: RM120

Four performers from four different Asian countries meet a South American director and a dramaturg from Europe—that’s half the world on one small stage. They have nothing in common: No shared love for food, no shared language, and every one of them grew up listening to different folk tales and lullabies. But what if they don’t know that? If everyone looks the same and no one speaks a word, how can you tell what’s “typical” about them? Find out in this silent performance.

FLUOROPHONE
19 Jul @ 8.30pm | **stage 2**
20 Jul @ 3pm | **stage 2**
Tickets: RM40, RM25 (students, senior citizens above 60, OKU). Package for 4: RM120

Speak Percussion, Australia’s most innovative percussive arts organisation that has taken the UK, Switzerland, Indonesia and Singapore by storm, makes its first appearance in Penang. *Fluorophone* is a collection of stark, minimal works composed of fluorescent tubes, strobes, electrical circuits and other surprising—and at times volatile—musical instruments. The performers play in complete darkness, lit only by intermittent flashes of white light from electricity-generated sonic snaps.

SUNFLOWER IS SINGING
20 Jul @ 8pm | **stage 1**
Tickets: RM45

Formed just last year, Sunflower Ensemble comprises a group of passionate singers who perform a variety of songs in English, Mandarin, Italian, and Japanese.

AUGUST

**BAI YUN’S CLASSIC SONGS CONCERT :
THE UNCHAINED MELODY OF PENANG 2**
17 Aug @ 7.30pm | **stage 1**
Tickets: RM65

Following his successful debut concert last year, Penang-born Bai Yun returns to present enduring Mandarin, Cantonese and English songs from the 1950s to 1980s. Prepare for an evening of beautiful nostalgia.

**PENANGPAC COMEDY CLUB
PRESENTS PCC**
21 Aug @ 8.30pm | **stage 2**
Tickets: RM15 (By donation)

So you think you’re funny? penangpac’s inaugural stand-up comedy showcase features a stellar line-up of local talents who are so full of themselves that it makes you question their liability. Whether you need a good laugh, want to impress your date or simply have money to waste, you won’t regret a few hours of forgettable nonsense.

RAINBOW
29 Aug – 1 Sep @ 8.30pm | **stage 2**
30 Aug @ 3pm | **stage 2**
Tickets: RM40 for Adults, RM35 (students, senior citizens above 60, OKU and TAS card holders)

Jack and Ellie live in different times and spaces but both have the same dream of chasing after the rainbow. Through a series of fateful encounters, they meet under the rainbow. Did they capture the rainbow in their hearts? Only one way to find out—catch the Rainbow.

SEPTEMBER

BALLET ILLUMINATIONS
13 – 14 Sep @ 8:30pm | **stage 1**
14 – 15 Sep @ 3pm | **stage 1**
Tickets: RM25 (Fri), RM38 (Sat & Sun matinee) RM48 (Sat evening)

Singapore Dance Theatre returns to Penang with two remarkable works by Choo-San Goh, *Double Contrasts* and *Configurations pas de deux*, as well as Val Caniparoli’s *Triptych*, and Toru Shimazaki’s *Unexpected B*.

OCTOBER

STORY OF TOLON
10 Oct @ 11am | **stage 2**
11 – 12 Oct @ 8:30pm | **stage 2**
12 Oct @ 3pm | **stage 2**
Tickets: RM40 ,RM35 (students, senior citizens above 60, OKU and TAS card holders)

Inspired by Rusaidi Ramli’s *Kontradiksi Tolol*, this tragic comedic play tells of Raju, a coconut tree climber, who had a conflict within himself after falling from a jackfruit tree twice. It increasingly dominates him to a point where his fellow villagers, including his wife Priya, believes him to be mentally ill. Is he actually crazy or has he been possessed by a ghost?

LET’S PLAY
19 – 20 Oct @ 3pm | **stage 2**
Tickets: RM25

After three semesters of training at The Actors Studio Academy @ penangpac, it’s time to see the students shine!

NOVEMBER

**SHORT+SWEET MALAYSIA 2019
IN PENANG**
Dance : 6 – 9 Nov @ 8:30pm | **stage 2**
Theatre : 13 – 16 Nov @ 8:30pm | **stage 2**
Tickets: RM40, RM30 (Conc.), RM50 (Dance+Theatre)

Short+Sweet is the biggest platform for 10-minute bursts of creativity. Join us at this “biggest little festival in the world” and be amazed by upcoming stars in the performing arts industry.

DECEMBER

LOVE THY RABBIT
13 – 14 Dec @ 8:30pm | **stage 2**
15 Dec (Sun) @ 3pm | **stage 2**
Tickets: RM43, RM33 (students, senior citizens above 60, OKU and TAS card holders)

Wangi was on the verge of committing suicide after being cheated on by her sweet-talking playboy boyfriend, Roy, when she encountered a magical talking rabbit, Arn, that can transform into other animals. When Roy attempts to reconcile with Wangi, Arn declares his love for her too. Is it true love or simply a figment of Wangi’s imagination?

FAMILY CHRISTMAS CONCERT
20 – 21 Dec @ 8:30pm | **stage 1**
Tickets: RM40 ,RM30 (students, senior citizens above 60, OKU and TAS card holders)

Have yourself a merry little Christmas at this annual concert full of Yuletide warmth and cheer. Psst ... Santa Claus may make a special appearance too!



NOTE
1. All the above performances are held at penangpac.
2. The details above are correct at the time of printing and may be subject to change. For the latest updates, please log on to www.penangpac.org.

A RIVER RUNS THROUGH

The Chao Phraya is the lifeline of Bangkok, its waters a bustling transportation route while its riverbank is home to important landmarks and trendy lifestyle hotspots. Here are six of them.

Admire: Grand Palace and Wat Phra Kaew. Don't leave Bangkok without visiting the Grand Palace, arguably the city's most famous and revered landmark. It comprises a complex of buildings—each an homage to the creativity and ingenuity of Thai architecture—as well as pavilions, open

lawns, manicured gardens and restful courtyards. Within its compounds, you can also visit Wat Phra Kaew (Temple of the Emerald Buddha), considered the country's most important Buddhist temple and home to a stunning image of Buddha carved from a single block of jade.



Travel tip:
The Chao Phraya Tourist Boat is more suited to visitors and provides English commentary on board. It commutes between 13 piers that will place you within walking distance to key attractions.



Shop: ICONSIAM

In a city that’s chock-a-block with malls, it takes something pretty extraordinary to make waves among shoppers and ICONSIAM did just that. Their official launch cost a whopping THB1 billion, highlighted by a light show featuring 1,500 drones and a live performance by Alicia Keys. The mall, spanning 75,000 sqm, impresses with

its stunning architecture that’s inspired by the traditional blossom-shaped *krathong* and is best seen from the free shuttle boat from Sathorn Pier. ICONSIAM houses a smorgasbord of international fashion labels, lifestyle brands, world-class dining options and a waterfront plaza, River Park.



Experience: Lhong 1919

Spend a few hours at Lhong 1919 and be transported to 19th-century China. This courtyard-style mansion has been beautifully restored to present an attraction that combines history, culture, religion and contemporary lifestyle pursuits. Walk through the rooms on the upper floor for a glimpse of life back then, complete

with antique furniture and fixtures. The ground level, meanwhile, hosts cafes, pubs, restaurants, boutiques and specialty stores—popular Thai olfactory brand Karma Kamet has a retail outlet and diner here. In the centre of all these is a shrine dedicated to Mazu, the Chinese goddess of seafarers.



Stay: The Siam Hotel

Plush and lush, this boutique property fuses Art Deco aesthetics with traditional Thai design elements to stunning effect. Luxurious and intimate at the same time, a stay at The Siam is truly a destination and experience in itself. At Chon Thai Restaurant, your tastebuds will dance to the

exquisite flavours presented by Chef Damri or if it's relaxation you're after, book a spot at Opium Spa and melt into total relaxation. For the ultimate, book a stay at Connie's Cottage, a 100-year-old traditional teak house transformed into a rustic, elegant pool house for two.

Travel tip: Express ferries travel along the river and its many canals all day, usually packed to the brim as locals go about their daily lives. It's pretty much a touch-and-go affair; during rush hour, the boats slow down as they approach the piers without completely stopping and passengers hop out quickly. Regulars do this with ease but for visitors, it can be intimidating. That said, it is an authentic Bangkok experience worth trying—just avoid rush hour!



Photo courtesy of The Siam Hotel



Photo courtesy of The Siam Hotel

Since it opened in 2012, the hotel has steadily picked up a string of awards. This year, it made it to The Gold List of Conde Nast Traveller, both UK and US editions, voted Best of Bangkok by TripExpert, and named Hotel of the Year 2019 (Asia Pacific) at the Preferred Awards of Excellence.



Photo courtesy of The Siam Hotel

Connie's Cottage is a centennial traditional Thai teak house transformed into a rustic pool house

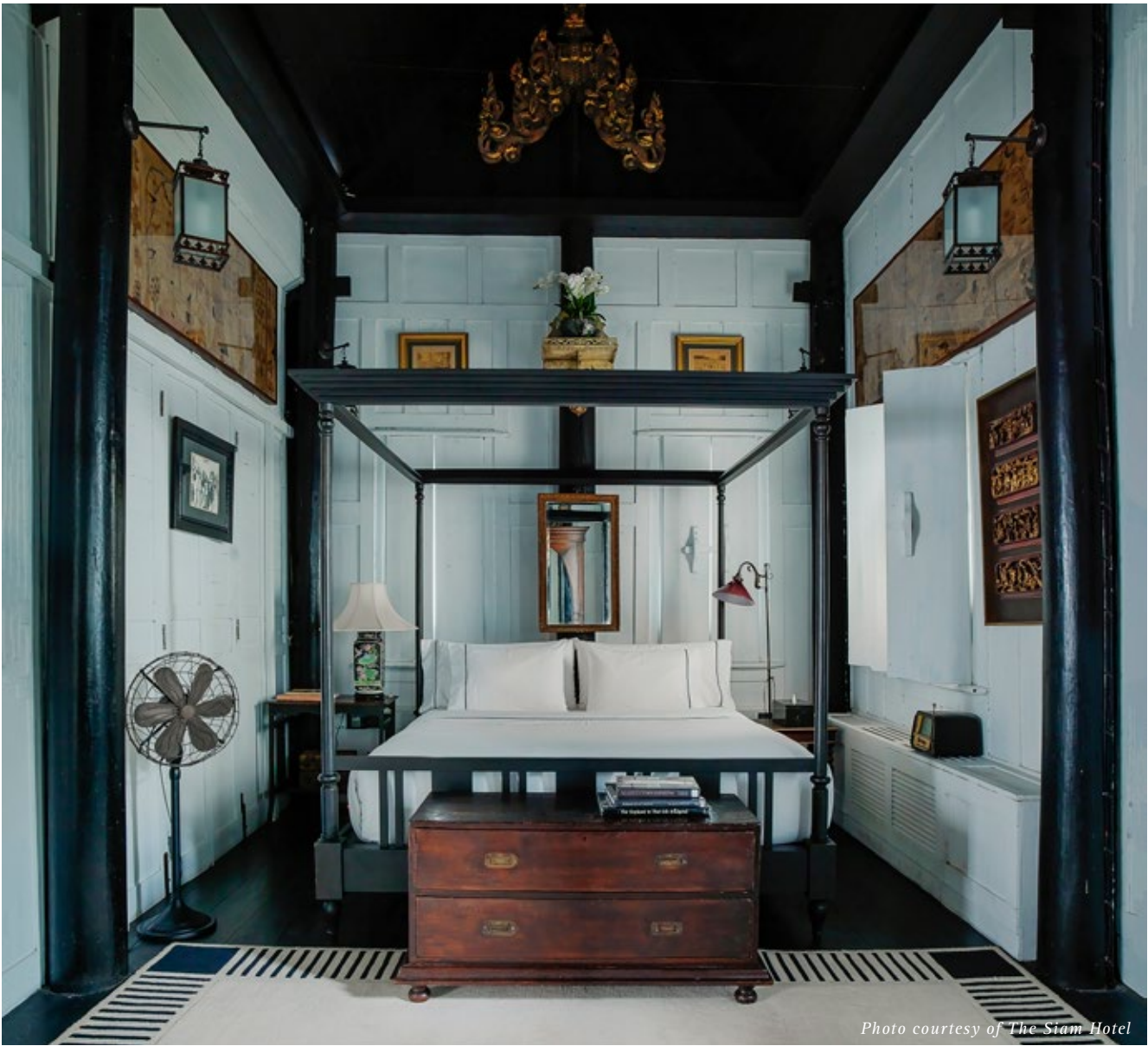


Photo courtesy of The Siam Hotel

PUBLISHED BY

EASTERN & ORIENTAL BERHAD (555-K)
Level 3A (Annexe), Menara Milenium
8 Jalan Damanlela, Damansara Heights
50490 Kuala Lumpur, Malaysia

T 603 2095 6868
F 603 2095 0231
E corp.comm@easternandoriental.com

PRINTED BY

CLASSIC OFFSET PRINT SDN BHD (729079-M)
11 Jalan Alfa Impian 2
Taman Perindustrian Alfa Impian
43300 Balakong, Selangor, Malaysia

T 603 8964 5661
F 603 8964 5669

